

FC3-261

Product Value Presentation





Options and Accessories



Technical Data



Operators Environment



Engine



Mower Deck



Driveline





Introduction

The Kubota FC3-261 compliments the F Series with the offering of large area mowing with collection through rotary cutter or flail mower.

Productivity and comfort are two of the key features on offer with this machine. The center collecting system via a turbine is very efficient and provide excellent collecting quality.

The deck is floating and allows any ground contour to be followed, minimising potential damage to the turf.

An impressive 800 litres, high dump collector boosts efficiency when collecting grass. Its clearance height of 2050mm provides excellent access when depositing the cut grass into waste skips, collection trucks or bins.



- **Municipal and professional contractors** – Parks and public gardens. The FC3-261 offers the power and performance required to tackle a variety of ground terrain and grass conditions. Large areas cut quickly and effectively. Grass collection from a fine cut mower ensures the perfect finish. Spacious operating platform and a comfortable driving position ensures long working days are made easier. Reduced budgets and less frequent mowing cycles mean that the local authorities may require a machine with the option of a flail mower that can not only collect but will cut and mulch lush grass without untidy swathings.
- **Sports turf** – General mowing maintenance for Sports grounds and Golf courses where large areas are required to be cut quickly and efficiently. Front mounted allows the cutting of awkward areas which mid-mounted mowers can not access.
- **Large estates / Holiday parks** – Precision cut and collection. Comfort and ease of setting are high priorities. Large volume collector reduces the cycle time spent emptying. Rough land or long grass maintenance which requires rugged flail mower operation.

- Kubota 3-cylinder 1123cc stage V liquid cooled diesel engines.
- HST transmission with twin pedal operation.
- Infinite speed control up to 15 Km/h.
- Suction turbine: provides fast and effective transfer of cut material.
- High dump, large capacity 800 litre collector with parallelogram raise/lower system.
- Differential lock.
- Patented HTC™ (Hydrostatic Traction Control)
- Comfortable operating position with “Silent block” mounted platform and generous floor area.
- Foldable ROPS.
- Choice of rotary or flail mower deck. Either option comes with collector system.
- Lift / lower of the mower deck and operation of an auxiliary valve controlled from a single lever joystick.
- All control levers and operating switches incorporated within a RH console, including a USB charging point + phone holder.



Manufacturing

The manufacturing plant that produces both the FC3 and FC4 models is a Kubota owned facility in Italy.

Apart for the Kubota engines and hydrostatic units, the other key areas like the chassis and operator platform are manufactured “In-house”.

All mower decks (Rotary and flail) are also manufactured in the factory. Even wiring harnesses are made internally.

The result of having the vast majority of the machine manufactured internally means that the factory is not as vulnerable to component delivery delays and supply issues and also quality control responsibility is within the company.





Operators

Environment



- 1. HST drive pedals
- 1. Park brake pedal
- 1. Deck raise / lower
- 1. Hydraulic function lock
- 1. Suction turbine ON / OFF switch
- 1. Auxiliary hydraulic services
- 1. LED lights
- 1. PTO engagement
- 1. Hand accelerator
- 1. Grass collection system (Lift, tip)
- 1. Tilttable steering wheel
- 1. Digital Instrument display



TECHNICAL FEATURE

Operator platform floor area

Monocoque design chassis



ADVANTAGE

- Innovative angled floor panel gives generous driving area.
- Hinged seat frame allows maintenance access.

BENEFIT

- ✓ Monocoque structure has strong resistance to stress yet lightweight in construction.

TECHNICAL FEATURE

Operator seat



ADVANTAGE

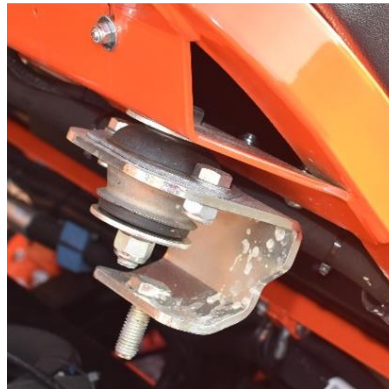
- Deluxe seat with reclining backrest, adjustable armrests and seat belt.
- Wipe-clean plastic cover.

BENEFIT

✓ Driving comfort to suit the individual operator.

TECHNICAL FEATURE

“Silent-block” mounted platform



ADVANTAGE

- Reduced vibration transmitted to the operator.

BENEFIT

✓ Enhanced comfort.

TECHNICAL FEATURE

ADVANTAGE

- Complete roll-over protection system (ROPS) to keep operator safe during operation.
- Neat fold-down bar allows operation under low hanging tree branches.

ROPS protection



BENEFIT

- ✓ Safety assured for the operator.
- ✓ Possibility of working under tree branches.
- ✓ Possibility of loading the machine into vans.

TECHNICAL FEATURE

ADVANTAGE

Tilting steering wheel



- Forward tilting steering wheel.
- Quickly unlatched and pushed forward to help with entry and exit.



BENEFIT

- ✓ Adjustable to suit the individual operator and ensure a comfortable driving position.

TECHNICAL FEATURE

ADVANTAGE

LED lighting

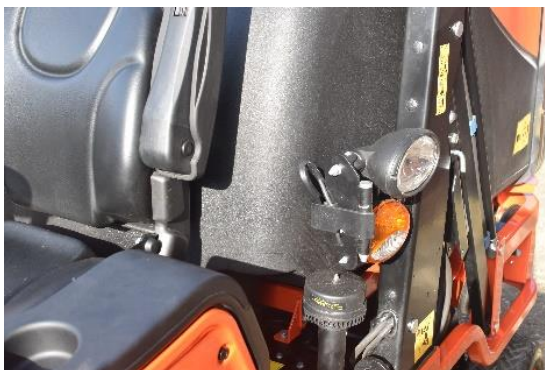


Front lighting

- Stylish LED lighting provides excellent visibility in the dark.
- Fold-back bracket keeps the lighting within the overall width.



Side mounted lighting



Fold-back bracket

BENEFIT

- ✓ Extends the working day.
- ✓ Fold-back bracket prevents damage when operating in very restricted areas.

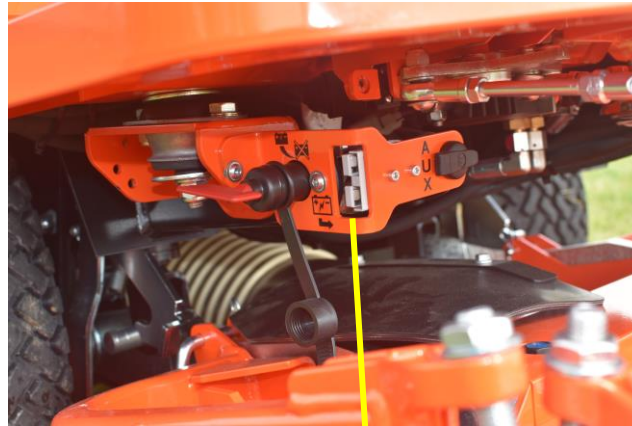
TECHNICAL FEATURE

Battery disconnect.

12V auxiliary socket.

Battery jump start connection.

(Located under the operator platform)



ADVANTAGE

- Battery disconnect switch. Useful if storing the machine over winter.
- 12V socket within easy reach provides an external power supply.
- Jump start lead provided.

BENEFIT

- ✓ Removal switch key for added security and safety.
- ✓ Conveniently positioned to power any electrical components attached to the front of the mower.

TECHNICAL FEATURE

USB port



ADVANTAGE

- A “must have” feature.
- Phone holder conveniently positioned for both storage and charging.

BENEFIT

✓ Handy charging point.

TECHNICAL FEATURE

Storage compartment



ADVANTAGE

- Conveniently located under the seat.
- Ideal place to store the operator manual.

BENEFIT

✓ Quick and easy reference to the manual while working on the job.

TECHNICAL FEATURE

Transportation strap down brackets



ADVANTAGE

- Purpose built transport strap brackets provide safe, secure transportation of the machine.

BENEFIT

- ✓ No potential damage to the mower by trying to secure strapping to other areas of the machine.

TECHNICAL FEATURE

Instrument panel



ADVANTAGE

- All major operating information easily viewed.

BENEFIT

- ✓ Keeps the operator informed of speed settings and operational functions.



Engine

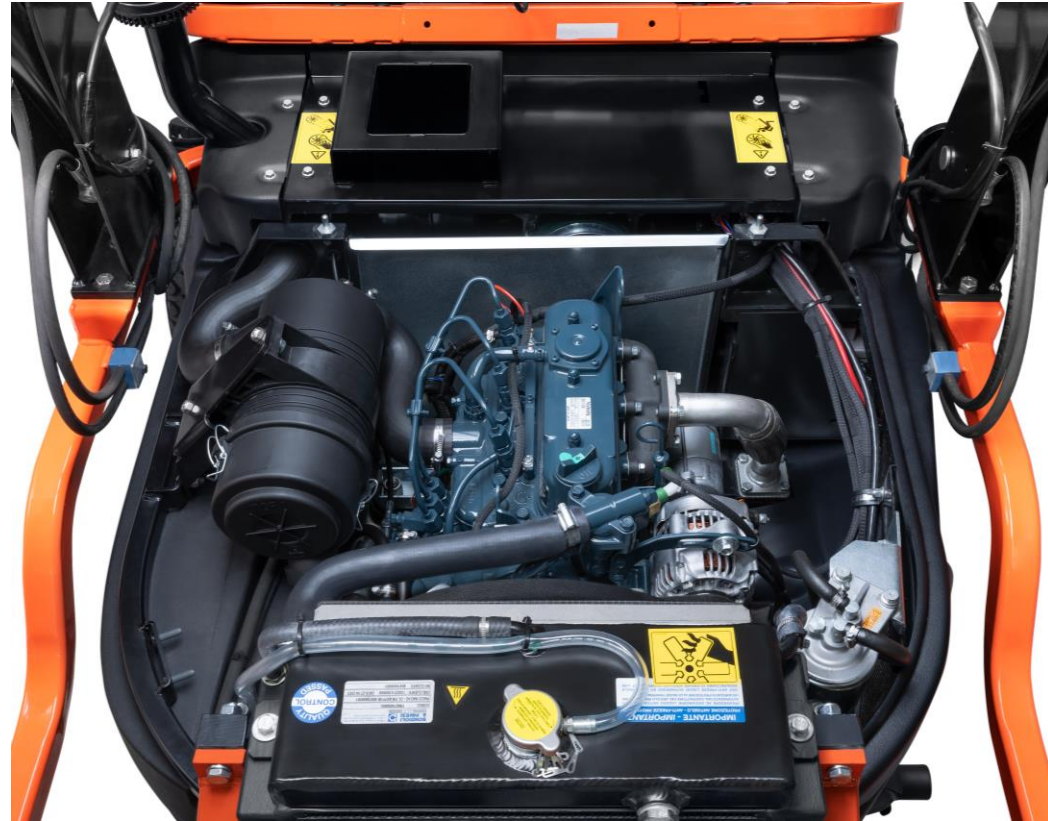
	FC3-261
Engine	D1105
Displacement (cc)	1123
Cylinder	3
Bore / Stroke (mm)	78 x 78.4
Gross power (hp / kW)	24.8 / 18.2
Injection	Unit injector
Aspiration	Natural
Rated speed (rpm)	3300
Service intervals (hrs)	100



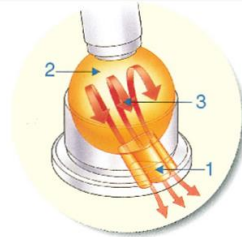
The Kubota D1105 diesel engine

Key points:

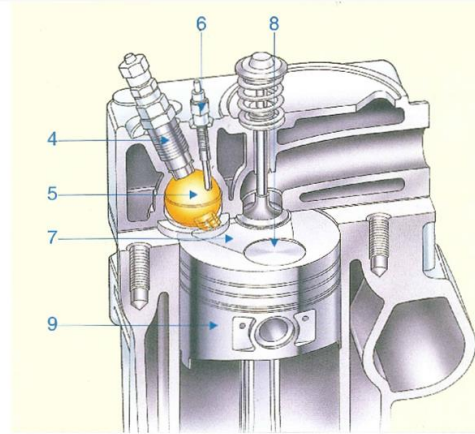
- Kubota manufactured unit
- 3-cylinder liquid cooled
- Clean power using the Kubota E-TVCS (Three vortex combustion system)
- In-line fuel injection system
- Radiator screen protection
- Fuel tank capacity of 30 litres
- Easy access for checks and maintenance



TECHNICAL FEATURE



1. Throat of Combustion Chamber
2. Combustion Chamber
3. Three Vortex
4. Injection Nozzle
5. Combustion Chamber
6. Glow Plug
7. Recess Concave
8. Valve Recess
9. Piston



Kubota E-TVCS (Three vortex combustion system)

The concave recess on the piston head helps Kubota's E-TVCS (Three Vortex Combustion System) generate three intense swirling air flow (vortexes) within the spherical-combustion chamber to obtain an optimum air/fuel mixture.

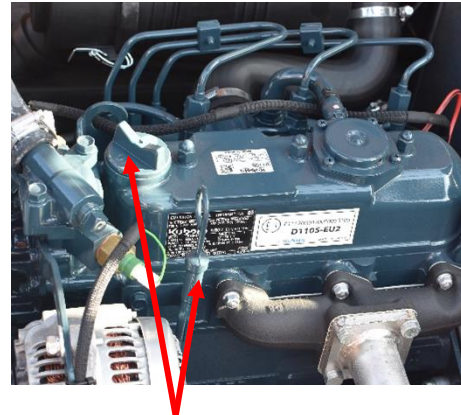
ADVANTAGE

- Efficient and effective combustion process.
- Reduced noise and emissions.

BENEFIT

- ✓ Improved power output
- ✓ Reduced fuel consumption
- ✓ Smooth engine start-up

TECHNICAL FEATURE



Engine oil filler and dipstick

Maintenance access and daily checks

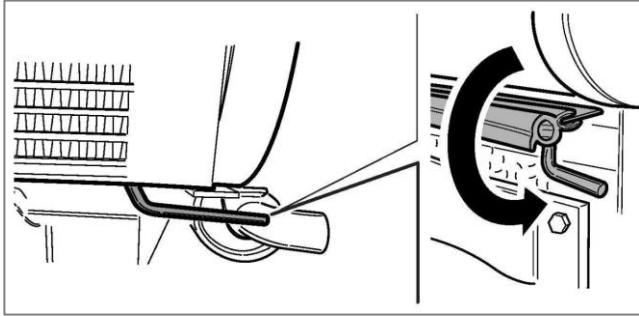
ADVANTAGE

- Easily removable engine cover.
- Complete access to the engine compartment for daily checks.

BENEFIT

- ✓ Checks and cleaning can be carried out with ease.
- ✓ Easy access encourages more frequent checks.

TECHNICAL FEATURE



Panel which can be opened to discharge dirt onto the ground between the conveyor and the radiator.



Radiator debris screen



Air filter



Engine air filter pre-cleaner

ADVANTAGE

- Access to the radiator dust screen is quick and simple.
- No obstructions to remove air filter.
- Pre-cleaner removes the heavy dust and debris.

BENEFIT

- ✓ Radiator screen provides extra protection against overheating.
- ✓ Prolonged filter life.



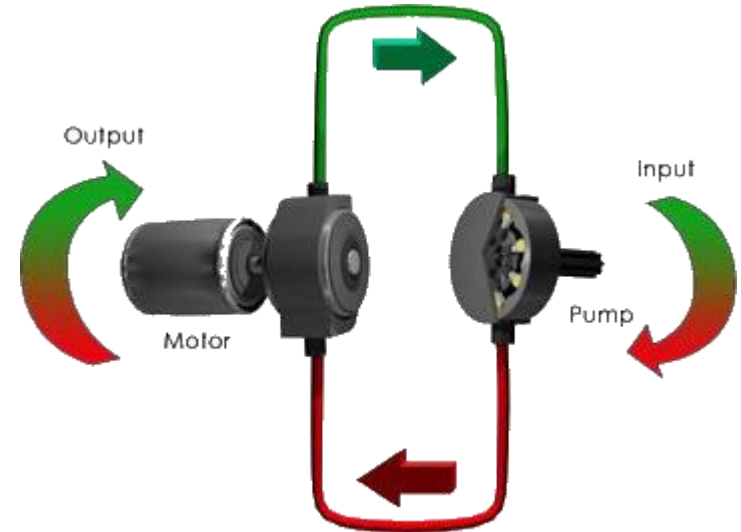
Driveline



The HST transmission (Hydrostatic Transmission).

Key points:

- Dual pedal operation for forward and reverse direction
- Infinitely variable speed up to 15kph
- Patented HTC™ device (Hydrostatic Traction Control)
- Differential lock
- Foot operated parking brake pedal
- 4WD



TECHNICAL FEATURE

Patented HTC™ (Hydrostatic Traction Control)

Variable displacement axial piston pump.

Axial piston motors.

- 1 x front gear drive axle with reduction gears.
- 2 x rear gear drive axle.

Having separate drive motors on each axle allows independent control of the speed of the two axles.

This allows the HTC system to ensure:

- Permanent traction on all four wheels during turning.
- Greater safety for the operator through constant 4WD.



Rear axle. Dedicated drive motors to each wheel.

ADVANTAGE

- No transmission drive shaft connecting the two axles.
- Not all competitors can guarantee constant drive in all operating situations.

BENEFIT

- ✓ Allows the engine to be fitted between the axles. Optimal centre of gravity is achieved.
- ✓ Prevents the wheels from damaging the turf whilst turning through skids and slippage.

TECHNICAL FEATURE

HST motion pedals



ADVANTAGE

- Dual pedal operation.
- Up to 15 kph forward speed.

BENEFIT

✓ Comfort and ease of use.

TECHNICAL FEATURE

Park brake



ADVANTAGE

- Foot operated parking brake pedal. Press to lock and unlock.

BENEFIT

✓ Safe and secure stopping and parking on incline terrain

TECHNICAL FEATURE

Differential lock



ADVANTAGE

- 100% mechanical locking.
- Heel operation means the diff pedal is not obstructing the platform area.
- Disengagement when the pedal is released.

BENEFIT

✓ Ability to quickly react and prevent wheel slip or damage the turf.

TECHNICAL FEATURE

Power steering



ADVANTAGE

- Quick and easy turning of the steering wheel with hydraulic power steering.

BENEFIT

✓ Reduces operator fatigue by allowing effort-free turning when mowing around trees and other obstacles.



Mower Decks



Mower deck model identification

Model	RCR – Mower deck type	Deck size (inch)	Mowing operation	Machine fitment
RC50C-FC3	RC: Rotary cut. (Regular rotation)	1.26m – 50”	C: Grass collecting	FC3
RCR51C-FC3	RCR: Rotary cut. (Reverse rotation)	1.30m – 51”	C: Grass collecting	FC3
RCF53C-FC3	RCF: Flail mower	1.35m – 53”	C: Grass collecting	FC3



Front mower decks

Front mower decks have the ability to mow under various objects such as park benches and bushes. The cutting quality is uniform and precise as there is no worry about the front tyres leaving track marks in the grass. Less weight is on the front wheels and more weight concentrated on the drive wheels, offering good traction and handling. The HTC system removes the problem of turf scuffing during tight turns. (Drive wheels slipping)

Key benefits for front mounted mowers

- ✓ **Better cutting quality.** The grass is not run over before cutting.
- ✓ **Better visibility and comfort** for the operator.
- ✓ **Better manoeuvrability and cutting** in areas that cannot be accessed by mid-mount decks.
- ✓ **Better adaptation to the ground contours**, for more precise cutting.



TECHNICAL FEATURE

Independent PTO drive system



ADVANTAGE

- Belt actuated PTO drive.
- Fully independent system.
- Switch engagement.

BENEFIT

- ✓ Mowing little maintenance requirements.

TECHNICAL FEATURE

Mower deck options

Rear discharge with collector

1.26m (50") width deck

1.30m (51") width deck with reverse rotation

Reverse rotation:

The reverse rotation system rotates the blades in the opposite direction to a traditional rotary mower. The blade rotation plus the underbody design produces a very high quality cut finish.



1.26m deck



1.3m deck with reverse rotation

ADVANTAGE

- Fine cut finish with high productivity output.
- Rear discharge with short distance travel to the collector.

BENEFIT

- ✓ **Faster mowing with better results.**
- ✓ **Effective transfer of the chopped grass.**

TECHNICAL FEATURE

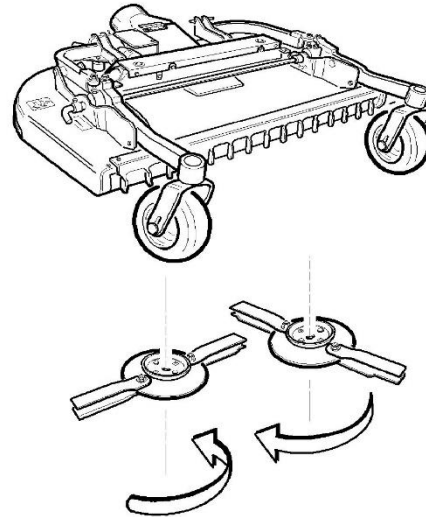
Mower deck operation

“Swing back” twin blades:

The “Swing back” system is designed to absorb shocks and protect the mower driveline against impact with foreign objects left in the grass.

The twin blades overlap to ensure a precise fine cut finish. The design also prevents accumulation of grass and soil debris in the upper part of the housing.

The front part of the housing is higher than the cutting level of the blades. This height difference means the grass isn't crushed and the blades can make an accurate, uniform cut.



ADVANTAGE

- Twin pair of retractable anti-collision blades.
- Enhanced productivity through reduced stoppages to clean out the deck.

BENEFIT

- ✓ Optimum cut, with optimum output.

TECHNICAL FEATURE

Mower deck height adjustment



ADVANTAGE

- Simple deck height setting using a lever at the top of the deck.
- Clever cam design adjustment.

BENEFIT

✓ The deck returns back to the required cutting height every time.

TECHNICAL FEATURE

Solid flat-free rubber tyres



ADVANTAGE

- Maintenance-free tyres

BENEFIT

✓ Practical and long lasting.

TECHNICAL FEATURE

Mower deck lift / lower



ADVANTAGE

- Lift/lower hydraulic rams provides a ramp angle of 40°.
- Mower deck operation and auxiliary valve control from a single lever.

BENEFIT

- ✓ Good clearance when driving up kerbs and pavements.
- ✓ Comfortable multi-function operation.

TECHNICAL FEATURE

Hydraulic auxiliary valve



ADVANTAGE

- An auxiliary valve is fitted as standard. Located below the operator platform.
- Operated by the lift / lower joystick.

BENEFIT

- ✓ Ensures simple operation of attachments that require additional hydraulic oil supply.

TECHNICAL FEATURE

3x1 Flail mower : cut, collect and scarify

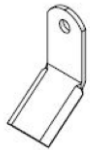
1.35m (53") width deck

Blade options

For cutting fine grass (spoon blades) and for clearing longer rough grass areas (Y-blades). By adding vertical blades, combined with the previous ones, it scarify the ground while working.



Paddle blades



Y blades



Vertical blades



ADVANTAGE

- Choice of blades. Standard fit - spoon blades. Y blades option.

BENEFIT

- ✓ Adaptable for cutting fine grass or clearing more dense areas. Vertical blades combined aerates the ground during work.

TECHNICAL FEATURE

Switching between collection and ground discharge

Closing or opening the flap using the special Allen key supplied determines whether the cuttings will be collected or left on the ground.

This flap can also be hydraulically operated through a switch on the armrest.



Lever Retainer.
Storage box.



Collection position



Ground discharge position

ADVANTAGE

- Choice of operations depending on the ground and location.
- Retainer for the handle.

BENEFIT

- ✓ Changing collection - discharge quickly and simply.
- ✓ Retainer means the handle is always with the mower.

TECHNICAL FEATURE

Mower deck height adjustment



ADVANTAGE

- Deck height setting using a lever at the top of the deck.

BENEFIT

- ✓ Simple, quick and easy.

TECHNICAL FEATURE

Patented blade removal system

The “**Smart System**” patent allows all the blades (Y, paddle and vertical) to be changed and combined on-site in less than 15 minutes thanks to the innovative magnet system.



ADVANTAGE

- Magnetic blade-locking pins.
- Time saving task.

BENEFIT

- ✓ High force magnetic locking.
- ✓ Secure locking pins, even when coming into contact with stones or other obstacles.

TECHNICAL FEATURE

Suction turbine



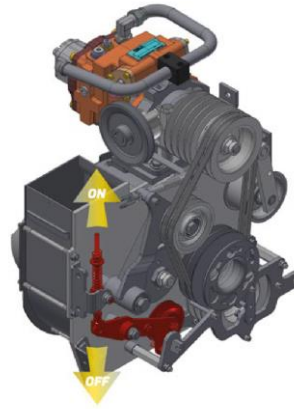
The suction turbine forms an integral part of the machines operation. Located centrally helps the cut grass to travel a short distance to the collector. This patented design provides not only fast and effective transfer of cut material but also;

- Allows the machine to remain compact without collection tubes protruding from the side allowing excellent manoeuvrability.
- Greater stability and balance with a better centre of gravity positioning.
- Exceptional versatility as the turbine and collector can be used with other attachments.
- An ON/OFF switch allows the operator to “Uncouple” the turbine depending on the attachment being mounted to the machine.

TECHNICAL FEATURE

ADVANTAGE

Suction turbine



- The collection procedure is more effective because the cut grass has a shorter distance to travel than most other systems.
- To ensure maintenance access is not restricted, the turbine inlet cover is a single piece retained by 4 screws.



BENEFIT

- ✓ Shorter distance to travel results in:
No blocking of the turbine and collection tube.
- ✓ Simple maintenance access to the engine / transmission area.

TECHNICAL FEATURE

High dump Collector (800 litre capacity)

NOTE

- The Unloader system will only operate when the PTO is disengaged.
- Unlatch switch needs to be activated when unloading.



ADVANTAGE

- Easy operation from the drivers seat.
- Built-in safety for the operator and bystanders.

BENEFIT

- ✓ Hydraulically operated from a single lever joystick.
- ✓ Total safety when not in use.

TECHNICAL FEATURE

High dump Collector (800 litre capacity)

Within the collector there are a number of features to ensure the collection system is fully utilised.

- A screen that regulates the air flow during operation. This is removable for cleaning.
- A deflector and load distributor which is motor driven to distribute the grass cuttings throughout the entire collector tank.
- A “tank full” alarm to prevent overload.



ADVANTAGE

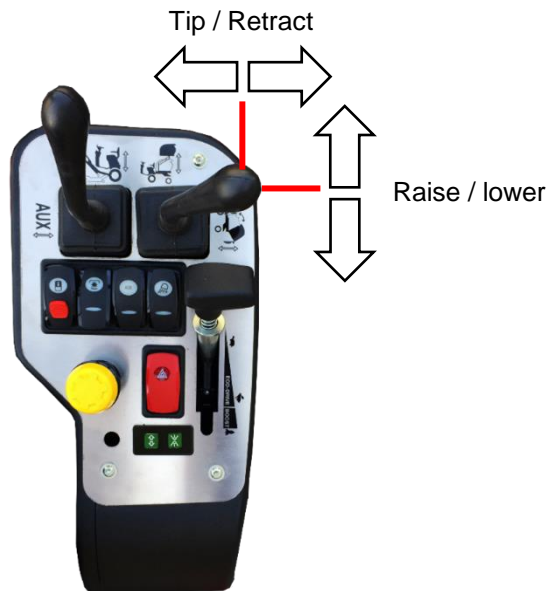
- Full utilisation of the tank capacity.

BENEFIT

- ✓ Less downtime due to less unloading.

TECHNICAL FEATURE

High dump Collector (800 litre capacity)



Maximum unloading
height – 205cm

Overhang @ Max.
height – 30cm

ADVANTAGE

- Hydraulically operated parallelogram system.
- High tipping clearance.

BENEFIT

- ✓ Lifting design allows dumping to be carried out effectively and safely.

TECHNICAL FEATURE

Collector safety latches



ADVANTAGE

- Latches on both collector lifting cylinders allows checks and maintenance to the engine compartment to be carried out safely.

BENEFIT

✓ Safe and secure.

TECHNICAL FEATURE

Rear counterbalance weights



ADVANTAGE

- Counterbalance weights ensures the machine can be attached with different decks without load distribution problems. Total weight 80kg.

BENEFIT

✓ Attachment and operation in safety.



Options and Accessories



TECHNICAL FEATURE

Vacuum hose

Polycarbonate hose

Length	500cm
Diameter	16cm
Weight	10.5kg



ADVANTAGE

- It can be used in all seasons to vacuum dry leaves and other light material.

BENEFIT

- ✓ Useful attachment for easily cleaning paths and public walking areas.

TECHNICAL FEATURE

Snow blade

Snow blade

Working width	150cm
Hydraulic adjustment	35° adjustment left / right
Dimensions (L/W/H)	131 / 150 / 57cm
Weight	114kg



ADVANTAGE

- Hydraulically lifted and angled. Useful attachment to provide clearing for private drives, parking areas.

BENEFIT

- ✓ Compact and able to operate in areas larger machines cannot access.



Technical Data



Range		FC3
Model		FC3-261 (4WD)
Version		Out front mowers
Manufactured		Italy
ENGINE		
Manufacturer		Kubota
Model		D1105
Emissions	Stage	5
Aftertreatment		Not required
Cylinder	n°	3
Valve	n°	6 (2 per cyl)
Displacement	cc	1123
Aspiration		Natural
Air filter		Dual stage
Injection system		Unit injector
Cooling system		Liquid
Cooling fan		Fixed
Gross power (SAE J1995)	hp/kW	26/19.2
Engine rated speed	rpm	3300
Engine hand accelerator		●
Battery	V/CCA	12V 44Ah-360A
Fuel tank capacity (std)	litres	30
Lateral exhaust pipe		●
Oil-change interval	hours	100

Range		FC3
Model		FC3-261 (4WD)
TRANSMISSION		
Manufacturer		KG
Transmission type		Hydrostatic Transmission (HST)
Hydraulic engine	n°	3
Speed range		1
Forward speed	km/h	15
Reverse speed	km/h	10
Transmission control		Dual foot pedal
Drive wheel type		4WD
Hydrostatic Traction Control (HTC)		•
Mechanical differential lock		•
Drive system to the PTO		Belt
PTO		
PTO drive clutch		Electro-hydraulic actuation belt drive
PTO drive engagement		Switch button
PTO speed	rpm	3300
BRAKES and STEERING		
Brake type		Hydrostatic
Parking brake type		Mechanical
Parking brake engagement		Foot pedal
Parking brake type		Brake disc
Steering operation		Steering wheel
Steering column adjustment		Tilt
Steering system		Hydraulic power steering



		FC3
		FC3-261 (4WD)
FRONT MOWER DECK SYSTEM		
Drive system to the deck		Cardan shaft
Drive system to the mower blades		Gearboxes
Deck lifting / lower		Hydraulic lever control
Deck mounting		2-point hydraulic rams
Discharge direction		Rear
Front hydraulic outlets		2
COLLECTOR		
Suction turbine		Centrally mounted
Turbine on/off switch		•
Grass collector capacity	litres	800
Dump system		Hydraulic
Max. unloading height	cm	205
Weight capacity	Kg	80
OPERATOR STATION		
ROPS		Foldable
Mounted on silent block		•
Instrument panel		LCD Display
Working hours		•
Fuel level gauge		•
Warning symbols		•
Headlight		LED
Road light kit		•
USB socket		•
Operator seat belt		•
Tie strap brackets		•

		FC3
		FC3-261 (4WD)
Range		
Model		
ROTARY MOWER DECK - RC 50C		
Rotation		Regular
Discharge		Rear
Cutting width	mm	1260 (50")
No. of blades		2
Blade length	mm	247 (single blade)
Cutting height range	cm	2 ÷ 8
Adjustment of cutting height		●
Anti-scalp rollers / Gauge wheels		2 front / 2 rear rollers
Weight	kg	106
ROTARY MOWER DECK - RCR 51C		
Rotation		Reverse
Discharge		Rear
Cutting width	mm	1300 (51")
No. of blades		2
Blade length	mm	218 (single blade)
Cutting height range	cm	2 ÷ 8
Anti-scalp rollers / Gauge wheels		2 front / 2 rear rollers
Adjustment of cutting height		●
Weight	kg	150
FLAIL MOWER DECK - RCF 53C		
Cutting width	mm	1350 (53")
No. of blades		Spoon blade kit and vertical blade kit (28 pieces) Y blade kit (56 pieces)
Cutting height range	mm	16 ÷ 69 mm ("Y" blades) / 19 ÷ 72 mm (spool blades)
Weight	kg	260

TECHNICAL FEATURE

ADVANTAGE

Range		FC3
Model		FC3-261 (4WD)
DIMENSIONS AND WEIGHTS		
Front tyres		23 x 10.5 - 12 (Turf)
Rear tyres		16 x 7.50 - 8 (Turf)
Wheelbase	mm	1260
Overall length (Without mower deck)	mm	2270
Overall length (With mower deck)	mm	2790 (GF 126 SA deck)
Overall height (With ROPS upright)	mm	2050
Overall height (With ROPS folded)	mm	170
Overall Width (Without mower deck)	mm	1140
Rear counterbalance weight	kg	80
Total weight (Without mower deck)	kg	1060
Maximum permissible front axle weight	kg	1200
Maximum permissible rear axle weight	kg	550
Maximum permissible total weight	kg	1600

- Compact dimensions

BENEFIT

- ✓ Can work in many narrow place
- ✓ Easily transported in a van or trailer



Finance with Added Value

At Kubota Finance, we support you to realize your investment in an easy, convenient and trusted way.

**Investment protected -
easily financed**

- Finance, Lease, Rent
- Tailored financial solutions for machines and services
- Professional consultancy
- Individual service
- Attractive terms
- Full cost control
- Interesting and fair conditions,
- i.e. monthly instalments





Kubota 3 cyl engine, 1123cc

Patented HTC™ (Hydrostatic Traction Control)

Mechanical suspension seat with back and armrest adjustment

Foldable ROPS

Adjustable tilt steering wheel

Dual pedal HST operation

Suction turbine

Anti-vibration platform mounts

Large capacity 800 litre collector

LED work lights with side folding brackets

Maximum speed 15 Km/h

Independent PTO drive shaft system

Comfortable operating position with generous floor area

High dump parallelogram system

Tilting platform for maintenance access

4WD

Lever operated hydraulic deck lift/lower system

Built-in storage compartment

Flail mower option

2-year warranty

Differential lock

Joystick control of mower deck and auxiliary valves

USB port and phone holder

Foot operated parking brake

All major operating components made in-house



Кубота

This product guide is document for internal use only and can't be share with other person without prior permission of KUBOTA. Every effort has been made to ensure that the contents of this publication were accurate and up-to-date at the time of going to press. All rights reserved. No part of this publication may be reproduced in any form by any means, without prior permission of Kubota. Kubota reserve the right as a manufacturer to amend and update any specification or performance information without notice, if required.